

## Section 2

# Drives, Incorporated USA Specialty Chain Products



# Drives, Incorporated Roller Conveyor Products

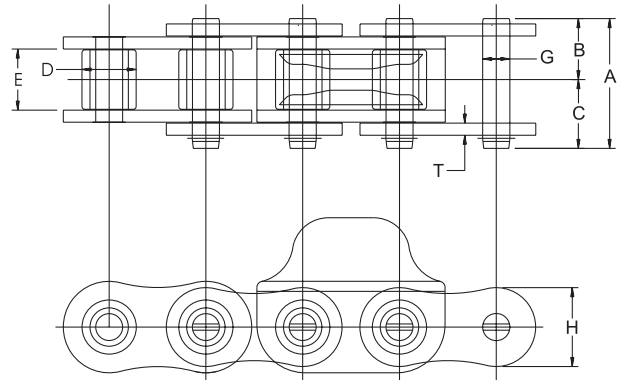
## Caterpillar Drive Chain

Caterpillar Drive Chains are essential in driving drop forged chain conveyors. Drives, Inc. USA Caterpillar Drive Chains provide high fatigue life and are designed to perform flawlessly with forged rivetless chains.

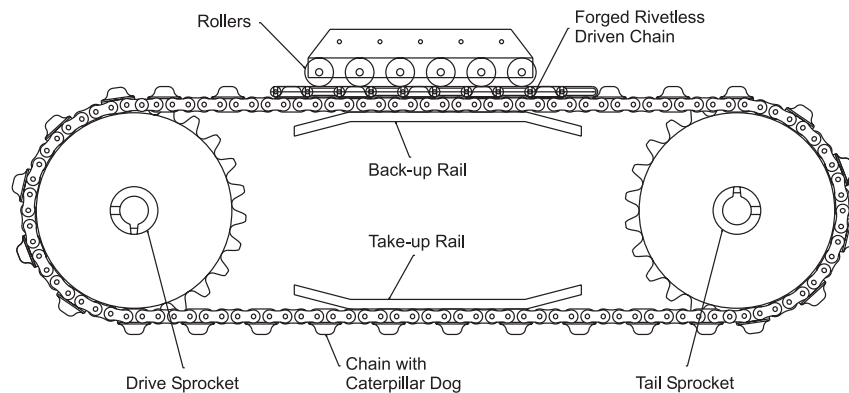
Drives, Inc. USA Caterpillar Drive Chains feature all ballized plates to ensure maximum bearing area for optimum press fits. This improves fatigue life and working loads. We use wide waist link plates with maximized ball heights to improve stress distribution that also increases fatigue strength and reduces vibration.

The use of through hardened pins that are micro ground and shotpeened provides maximum pin to bushing surface contact for extended wear and protection from any unpredictable overload. Hardened hook cotters\* are used to resist shearing and hold their place in the most rigorous of applications.

Our one-piece forged drive dog is induction hardened in the chain contact bearing area for wear resistance. The balance of the drive dog is through hardened for strength and durability.



## Caterpillar Drive Chain Detail



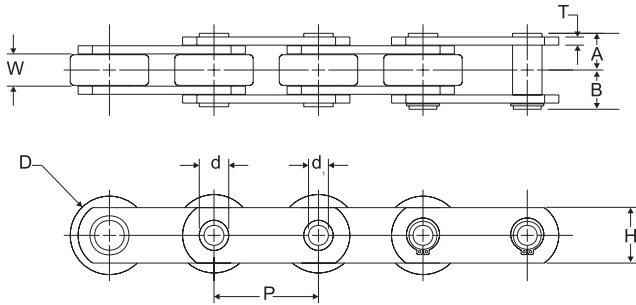
Drives, Inc.	Pitch	Chain Width			Diameter		Sidebars		Drive Dog Pitch Spacing	Average Ultimate Strength	Approx. Weight	
		Overall	Pin Head to CL	Pin End to CL	Inside Width	Roller	Pin	Thickness				Height
Chain No.	P	A	B	C	E	D	G	T	H		Lbs.	Lb./Ft.
160/348	2.000	2.723	1.269	1.454	1.250	1.126	0.563	0.250	1.899	6	58,000	8.3
160/458	2.000	2.723	1.269	1.454	1.250	1.126	0.563	0.250	1.899	4 or 6	58,000	8.3 or 10.0
160/678	2.000	2.723	1.269	1.454	1.250	1.126	0.563	0.250	1.899	6	58,000	9.8

\* Note: Dual cotter keys available upon request.

# Drives, Incorporated Roller Conveyor Products

Made in U.S.A.

## Hollow Pin Chain 2.000" Pitch



Drives, Inc.	Pitch	Width Between Inner L.P.	Bushing Dia.	Roller Dia.	Link Plate	Pin Dia.	Pin	Approx. Weight	Average Tensile Strength	Maximum Recommended Working Load
Chain No.	P	W	B	D	H T	d d <sub>1</sub>	A B	Lb./Ft.	Lbs.	Lbs.
HP200	2.000	0.617	-	1.500	1.060 0.156	0.564 0.382	0.703 0.750	2.500	15,000	2,600

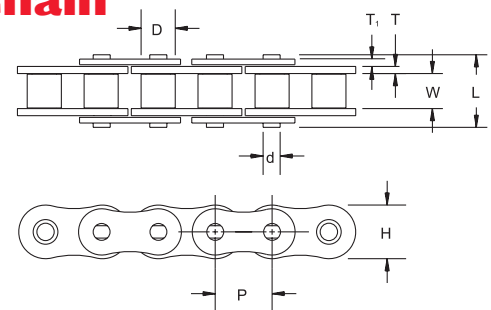
## Coupling Chain

Drives, Inc. coupling chain is manufactured in accordance with ANSI B29.1. These duplex chains utilize a standard duplex connecting link for easy installation.

Drives, Inc.	Pitch	Length	Approx. Weight	Drives Weight
Chain No.	Inches	Pitches	Lb./Ft.	Lbs.
40	0.500	12	0.410	0.410
40	0.500	16	0.550	0.550
50	0.625	16	1.120	1.170
50	0.625	18	1.260	1.320
60	0.750	18	2.160	2.330
60	0.750	20	2.400	2.590
60	0.750	22	2.640	2.840
80	1.000	18	5.000	5.600
80	1.000	20	5.560	6.230
100	1.250	18	9.240	10.510
100	1.250	20	10.300	11.670
120	1.500	18	16.200	18.610
120	1.500	22	19.800	22.740

## Extra Clearance EXC™ Conveyor Chain

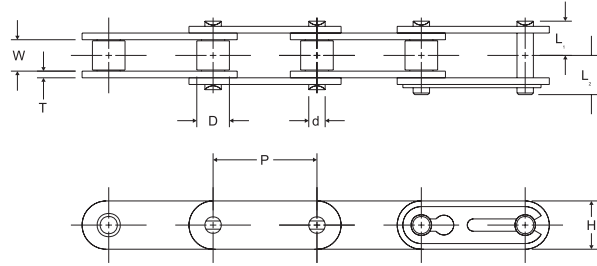
EXC conveyor chains are produced with "extra-clearance" to compensate for steel expansion at temperatures up to 500° F and to permit free joint-action at oven temperatures. Extra Clearance chain may be used with ANSI chain sprockets. Consult Drives, Inc. Engineering for application and available sizes.



Drives, Inc.	Pitch	Width Between L.P.	Roller Dia.	Link Plate	Pin Dia.	Transverse Pitch	Pin	Avg. Tensile Strength (Through Hardened)	Average Weight	Riveted	Cottered
Chain No.	P	W	D	H T	T <sub>1</sub>	d	L L <sub>1</sub> L <sub>2</sub> L <sub>3</sub> L <sub>4</sub>	Lb.	Lb./Ft.		
80 EXC	1.000	0.625	0.625	0.949 0.156	0.120	0.312	-- 1.413 0.839 0.707 0.839 0.707	21,500	2.200	STD	MTO

# Drives, Incorporated Extended Pitch Conveyor & E-Series Chain

## C2040 - 2160H Chain

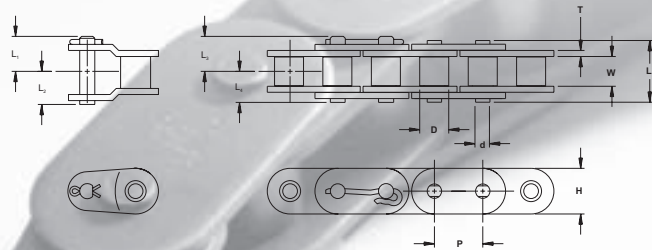


Available in riveted style.  
Cut-to-length chain available.

Drives, Inc.	Pitch	Width Between L.P.	Roller Dia.	Link Plate		Pin Dia.	Pin		Average Tensile Strength	Average Weight
Chain No.	P	W	D	H	T	d	L <sub>1</sub>	L <sub>2</sub>	Lb.	Lb./Ft.
C2040	1.000	0.312	0.312	0.472	0.060	0.156	0.319	0.382	5,700	0.340
C2050	1.250	0.376	0.400	0.591	0.080	0.200	0.409	0.477	6,100	0.580
C2060H	1.500	0.500	0.469	0.712	0.125	0.234	0.590	0.660	8,500	0.903
C2070H	1.750	0.500	0.469	0.712	0.125	0.234	0.590	0.660	8,500	0.948
C2080H	2.000	0.625	0.625	0.950	0.156	0.312	0.745	0.845	14,500	1.204
C2100H	2.500	0.750	0.750	1.186	0.187	0.375	0.993	0.863	31,350	2.500
C2120H	3.000	1.000	0.875	1.425	0.219	0.437	1.186	1.043	42,845	3.600
C2160H	4.000	1.250	1.125	1.899	0.283	0.563	1.520	1.339	69,160	6.200

Note: See pages 50-53 for available attachments on chain sizes C2040-C2080H. Contact Drives, Inc. Engineering for available attachments on chain sizes C2100H-C2160H. Riveted standard, cottered available upon request.

## E-Series Chain



Cut-to-length chain available.  
"E" Series recommended for heavy duty transfer systems.

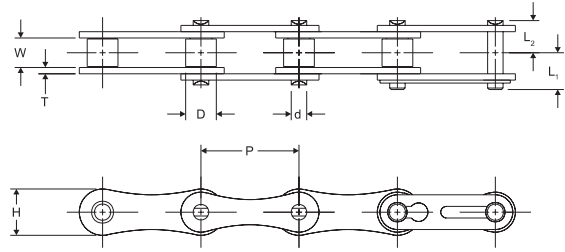
Available in riveted style.

Drives, Inc.	Pitch	Width Between L.P.	Roller Dia.	Link Plate		Pin Dia.	Transverse Pitch	Pin					Average Weight
Chain No.	P	W	D	H	T	d	E	L	L <sub>1</sub>	L <sub>2</sub>	L <sub>3</sub>	L <sub>4</sub>	Lb./Ft.
C60E	0.750	0.500	0.469	0.705	0.094	0.234	-	0.996	0.600	0.498	0.648	0.498	1.173
C80E	1.000	0.627	0.625	0.943	0.125	0.312	-	1.283	0.768	0.638	0.857	0.642	2.054
C100E	1.250	0.755	0.750	1.180	0.156	0.375	-	1.595	0.908	0.785	0.912	0.785	3.081
C120E	1.500	1.000	0.875	1.425	0.187	0.437	-	1.955	1.119	1.071	1.119	0.989	4.588
C140E	1.750	1.000	1.000	1.663	0.220	0.500	-	2.136	1.253	1.150	1.253	1.068	5.878
C160E	2.000	1.250	1.126	1.899	0.252	0.563	-	2.538	1.454	1.370	1.454	1.269	7.787

Note: Carrier roller available on made-to-order basis.

# Drives, Incorporated Extended Pitch Drive & Pin-Oven Chain

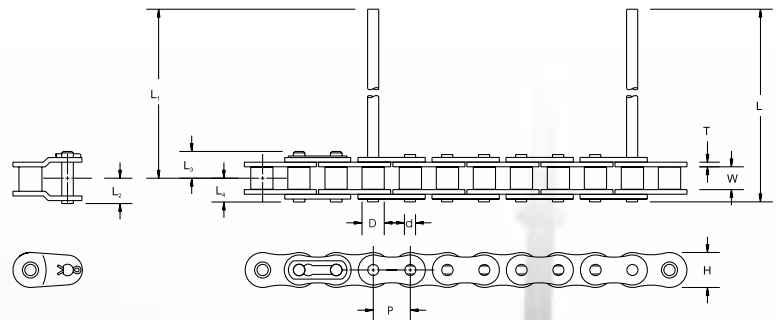
## A2040 - 2060 Chain



Available in riveted style.  
Cut-to-length chain available.

Drives, Inc.	Pitch	Width Between L.P.	Roller Dia.	Link Plate		Pin Dia.	Transverse Pitch	Pin		Average Tensile Strength	Max. Allowable Load	Average Weight
Chain No.	P	W	D	H	T	d	E	L <sub>1</sub>	L <sub>2</sub>	Lb.	Lb.	Lb./Ft.
A2040	1.000	0.312	0.312	0.472	0.060	0.156	--	0.382	0.319	3,700	860	0.270
A2050	1.250	0.376	0.400	0.590	0.080	0.200	--	0.476	0.409	6,100	1,389	0.450
A2060	1.500	0.500	0.469	0.705	0.094	0.234	--	0.579	0.500	8,500	2,095	0.630

## Pin-Oven Chain



Supplied without tips.  
Available in riveted style.

Drives, Inc.	Pitch	Width Between L.P.	Roller Dia.	Link Plate		Pin Dia.	Pin					Average Tensile Strength	Average Weight	Riveted
Chain No.	P	W	D	H	T	d	L	L <sub>1</sub>	L <sub>2</sub>	L <sub>3</sub>	L <sub>4</sub>	Lb.	Lb./Ft.	Y
60	0.750	0.500	0.469	0.705	0.094	0.234	7.950	7.450	0.500	0.579	0.500	8,500	1.262	Y

Made in U.S.A.

