

Drives, Incorporated Caterpillar Drive Chain

Conveyor Chain

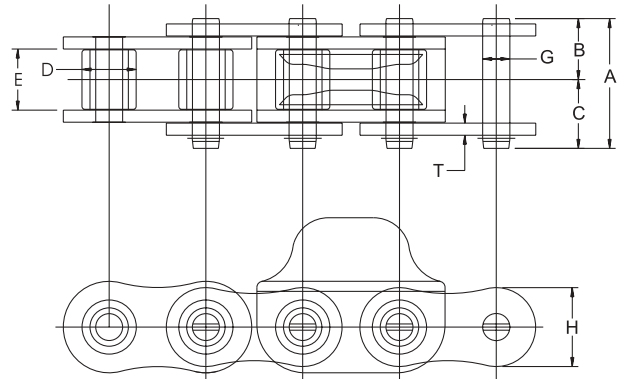
Caterpillar Drive Chains

Caterpillar Drive Chains are essential in driving drop forged chain conveyors. Drives, Inc. USA Caterpillar Drive Chains provide high fatigue life and are designed to perform flawlessly with forged rivetless chains.

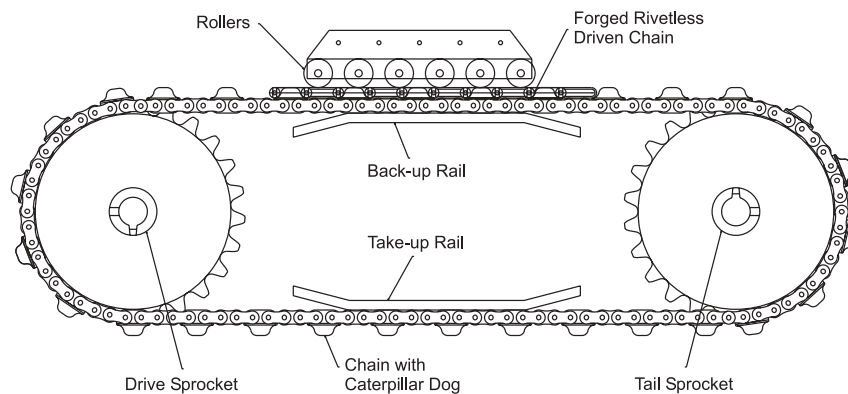
Drives, Inc. USA Caterpillar Drive Chains feature all ballized plates to ensure maximum bearing area for optimum press fits. This improves fatigue life and working loads. We use wide waist link plates with maximized ball heights to improve stress distribution that also increases fatigue strength and reduces vibration.

The use of through hardened pins that are micro ground and shotpeened provides maximum pin to bushing surface contact for extended wear and protection from any unpredictable overload. Hardened hook cotters are used to resist shearing and hold their place in the most rigorous of applications.

Our one-piece forged drive dog is induction hardened in the chain contact bearing area for wear resistance. The balance of the drive dog is through hardened for strength and durability.



Caterpillar Drive Chain Detail



| Drives, Inc. | Pitch | Chain Width | | | | Diameter | | Sidebars | | Drive Dog Pitch Spacing | Average Ultimate Strength | Approx. Weight |
|--------------|-------|-------------|----------------|---------------|--------------|----------|-------|-----------|--------|-------------------------|---------------------------|----------------|
| | | Overall | Pin Head to CL | Pin End to CL | Inside Width | Roller | Pin | Thickness | Height | | | |
| Chain No. | P | A | B | C | E | D | G | T | H | Lb. | Lbs. | Lb./Ft. |
| 160/348 | 2.000 | 2.723 | 1.269 | 1.454 | 1.250 | 1.126 | 0.563 | 0.250 | 1.899 | 6 | 58,000 | 8.3 |
| 160/458 | 2.000 | 2.723 | 1.269 | 1.454 | 1.250 | 1.126 | 0.563 | 0.250 | 1.899 | 4 or 6 | 58,000 | 8.3 or 10.0 |
| 160/678 | 2.000 | 2.723 | 1.269 | 1.454 | 1.250 | 1.126 | 0.563 | 0.250 | 1.899 | 6 | 58,000 | 9.8 |