

Auger Products



Order / Inquiry Data Sheet (Page 1 of 3)

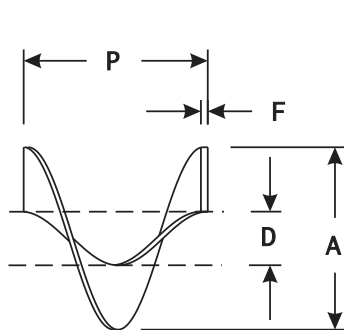
For Helicoid, Sectional, & Conveyor Screws

COMPANY _____ CONTACT _____
 ADDRESS _____ CITY _____ STATE _____ ZIP _____
 TELEPHONE _____ FAX _____

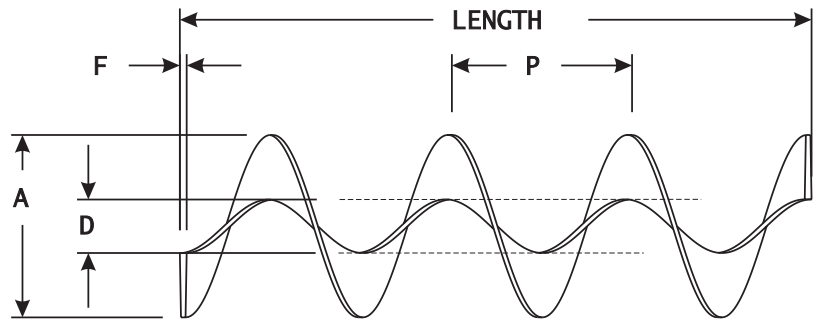
When there are no prints available, there is some information needed to help us in the handling of your inquiry in a timely manner.

QUANTITY _____	PART NO. _____	
____ CONVEYOR SCREW	____ FLIGHTING ONLY	____ CEMA SCREW - P/N _____
____ (H) HELICOID	____ (R) RIBBON	____ (S) SECTIONAL

DESCRIPTION	DIMENSIONS
1. SCREW DIAMETER O.D.	(A) _____
2. PITCH	(P) _____
3. FLIGHTING I.D.	(D) _____
4. FLIGHTING LENGTH	_____
5. FLIGHTING THICKNESS	(F) _____ (G) _____
6. SPIRAL - RH (SHOWN), LH (OPPOSITE)	_____
7. SCREW MATERIAL - IE., CAR, STEEL AR200, STAINLESS 304, 409, HSLA, OTHERS	_____
8. IS CUPPED OR FULL TILT FLIGHTING REQUIRED?	NO _____ YES _____ ANGLE REQUIRED _____



Sectional Flight



Helicoid Flighting

Auger Products

Order / Inquiry Data Sheet (Page 2 of 3)

DESCRIPTION	DIMENSIONS
9. OVERALL LENGTH - PIPE/SOLID SHAFT	(SL) _____
10. PIPE/SOLID SHAFT - O.D.	(D1) _____ (D2) _____
11. PIPE/TUBE - WALL THICKNESS	_____
12. BUSHING I.D. (INLET END)	(B) _____
(DISCHARGE END)	(B) _____
13. BOLT PATTERN/DIAMETER	(1) _____ (2) _____ (H) _____
14. BUSHING LENGTH	(3) _____
15. ARE TAIL, COUPLING, OR DRIVE SHAFTS REQUIRED?	_____
16. COUPLING SHAFT LENGTH	(3) _____
17. KEYWAY WIDTH, DEPTH, & LENGTH	(W) _____ (T) _____ (KL) _____
18. BARE PIPE/SHAFT (INLET END)	(4) _____
(DISCHARGE END)	(5) _____
19. FINISH - PLAIN, PAINT	_____
20. BALANCE - STATIC	_____
21. GUSSETS, QUANTITY	_____
22. CIRCULAR RUNOUT	ENDS _____ MIDDLE _____
23. SPECIAL INFORMATION:	_____



901 19th Avenue • Fulton, Illinois 61252-0350

Customer Service

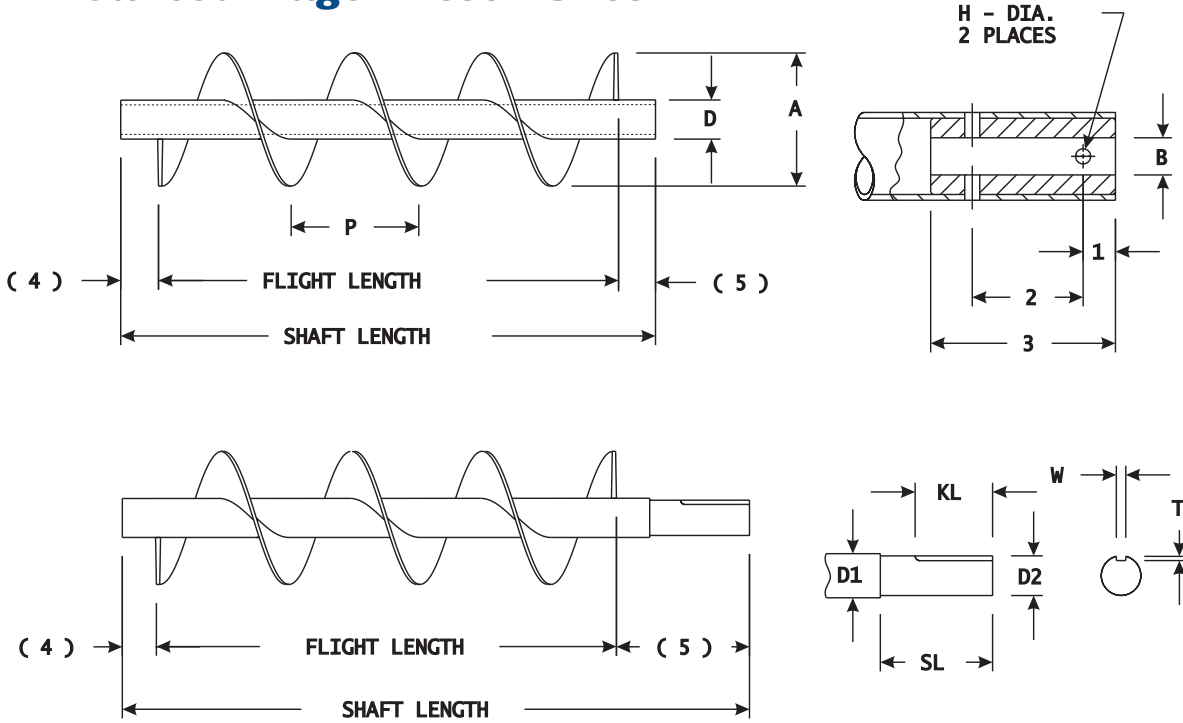
Phone 1-800-435-0782 • Fax 1-815-589-4420

www.drivesinc.com

Auger Products

Order / Inquiry Data Sheet (Page 3 of 3)

Mounted Auger Assemblies

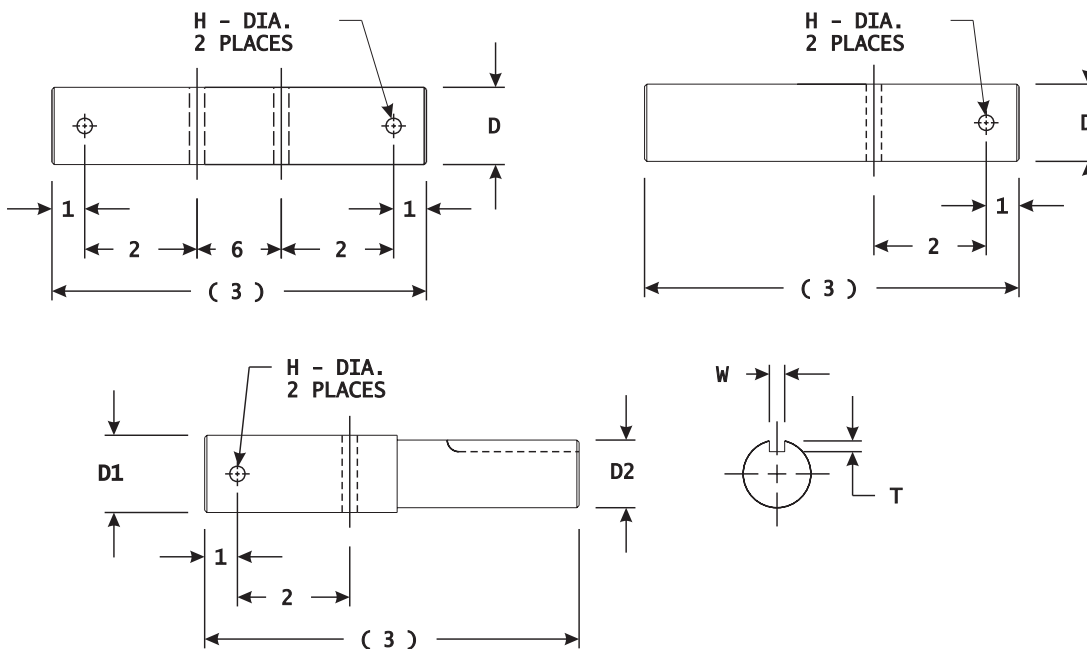


Choose:

- Helicoid
- Sectional
- Mounted
- Stainless
- Assemblies

Services offer you a broad range of options to meet your personal choice of product.

Coupling / Ends and Drive Shafts



1-800-435-0782

