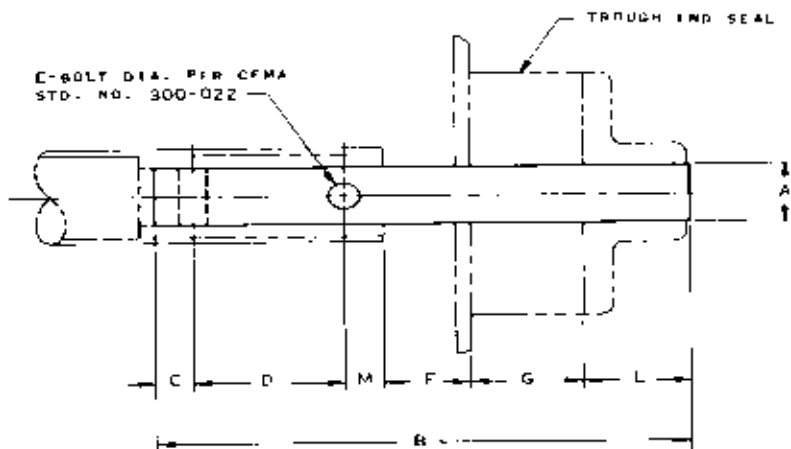


Auger Products

Drive Shafts



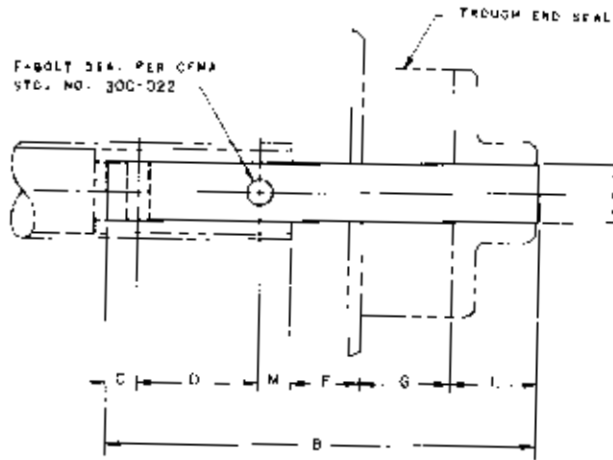
A	B				C	D	E	F	G	H	L		M
	For bab bearing		For ball bearing								For bab bearing	For ball bearing	
	With seal	Without seal	With seal	Without seal									
Inches													
1-1/2	14-1/4	12-1/2	13-1/4	11-1/2	7/8	3	17/32	1-1/4	1-3/4	3-1/4	3-1/4	2-1/4	7/8
2	16-1/2	14-3/4	14-7/8	13-1/8	7/8	3	21/32	1-1/4	1-3/4	4-1/2	4-1/4	2-5/8	7/8
2-7/16	19-1/8	17-3/8	16-7/8	15-1/8	15/16	3	21/32	1-13/16	1-3/4	5-1/2	5-3/16	2-15/16	15/16
3	20-7/8	19-1/8	18-3/8	16-5/8	1	3	25/32	1-7/8	1-3/4	6	6-1/4	3-3/4	1
3-7/16	25-7/8	23-5/8	22-7/8	20-5/8	1-1/4	4	29/32	2-3/8	2-1/4	7-1/4	7-1/4	4-1/4	1-1/2

*Dimension "F" is equal to one half (1/2) the hanger bearing space plus the thickness of the trough end plate from standard 300-013 or 300-104. Where more than one thickness is shown on these standards for the same shaft size, the greater thickness has been used.

CEMA STANDARD NO. 300-017

Auger Products

End Shafts



A	B				C	D	E	F*	G	L		M
	For bab bearing		For ball bearing							For bab bearing	For ball bearing	
	With seal	Without seal	With seal	Without seal								
Inches												
1-1/2	11	9-1/4	10	8-1/4	7/8	3	17/32	1-1/4	1-3/4	3-1/4	2-1/4	7/8
2	12	10-1/4	10-3/8	8-5/8	7/8	3	21/32	1-1/4	1-3/4	4-1/4	2-5/8	7/8
2-7/16	13-5/8	11-7/8	11-3/8	9-5/8	15/16	3	21/32	1-13/16	1-3/4	5-3/16	2-15/16	15/16
3	14-7/8	13-1/8	12-3/8	10-5/8	1	3	25/32	1-7/8	1-3/4	6-1/4	3-3/4	1
3-7/16	18-7/8	16-3/8	15-5/8	13-3/8	1-1/4	4	29/32	2-3/8	2-1/4	7-1/4	4-1/4	1-1/2

*Dimension "F" is equal to one half (1/2) the hanger bearing space plus the thickness of the trough end plate from standard 300-013 or 300-014. Where more than one thickness is shown on these standards for the same shaft size, the greater thickness has been used.

CEMA STANDARD NO. 300-018

Coupling Shafts

A	B	C	D	E	F
Inches					
1-1/2	11-1/2	7/8	3	17/32	3-3/4
2	11-1/2	7/8	3	21/32	3-3/4
2-7/16	12-3/4	15/16	3	21/32	4-7/8
3	13	1	3	25/32	5
3-7/16	17-1/2	1-1/4	4	29/32	7

CEMA STANDARD NO. 300-019

