

Drives, Inc. Attachment Chains

Drives, Inc. Attachment Chains available in Carbon Steel, Silver Shield CR™ coated, and Stainless Steel.

BA-1 Roller Link



BK-1 Roller Link



SA-1 Roller Link



SK-1 Roller Link



WBA-1 Roller Link



WBK-1 Roller Link



WBA-2 Roller Link



BA-1 Pin Link



BK-1 Pin Link



SA-1 Pin Link



SK-1 Pin Link



WBA-1 Pin Link



WBK-1 Pin Link



WBA-2 Pin Link



BA-1 Spring Clip Connecting Link



BK-1 Spring Clip Connecting Link



SA-1 Spring Clip Connecting Link



SK-1 Spring Clip Connecting Link



WBA-1 Spring Clip Connecting Link



WBK-1 Spring Clip Connecting Link



WBA-2 Spring Clip Connecting Link



WBK-2 Roller Link



WSA-1 Roller Link



WSK-1 Roller Link



WSA-2 Roller Link



WSK-2 Roller Link



D-1 Pin Link



D-3 Pin Link



WBK-2 Pin Link



WSA-1 Pin Link



WSK-1 Pin Link



WSA-2 Pin Link



WSK-2 Pin Link



D-1 Spring Clip Connecting Link



D-3 Spring Clip Connecting Link



WBK-2 Spring Clip Connecting Link



WSA-1 Spring Clip Connecting Link



WSK-1 Spring Clip Connecting Link



WSA-2 Spring Clip Connecting Link



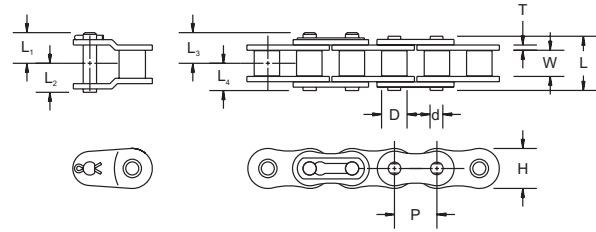
WSK-2 Spring Clip Connecting Link



Carbon steel attachment selection shown here.

Carbon Steel Attachment Chain

ANSI Chain Sizes Available with Standard Attachments

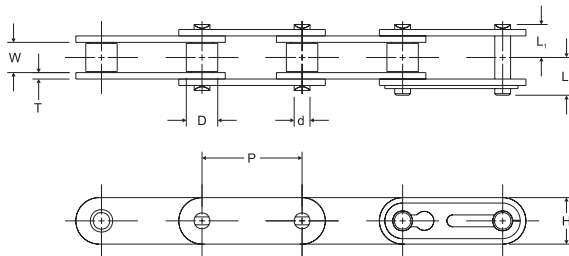


Carbon Steel

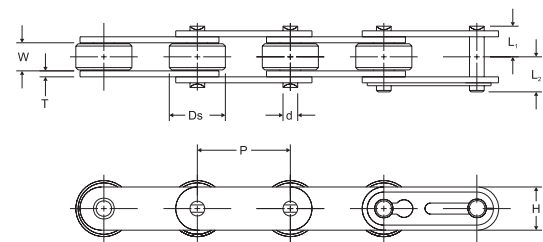
Drives, Inc.	Pitch	Width Between L.P.	Roller Dia.	Link Plate		Pin Dia.	Pin					Carbon Max. Allowable Load	Average Weight
							L	L ₁	L ₂	L ₃	L ₄		
Chain No.	P	W	D	H	T	d	L	L ₁	L ₂	L ₃	L ₄	Lb.	Lb./Ft.
40	0.500	0.312	0.312	0.472	0.060	0.156	0.630	0.404	0.317	0.377	0.315	615	0.420
50	0.625	0.376	0.400	0.590	0.080	0.200	0.795	0.489	0.399	0.489	0.398	1,010	0.713
60	0.750	0.500	0.469	0.705	0.094	0.234	0.996	0.600	0.498	0.648	0.498	1,410	1.067
80	1.000	0.626	0.625	0.943	0.125	0.313	1.283	0.768	0.638	0.857	0.642	2,350	1.868

Extended Pitch Roller Chain

Small Roller



Large Roller



Carbon Steel Small Roller

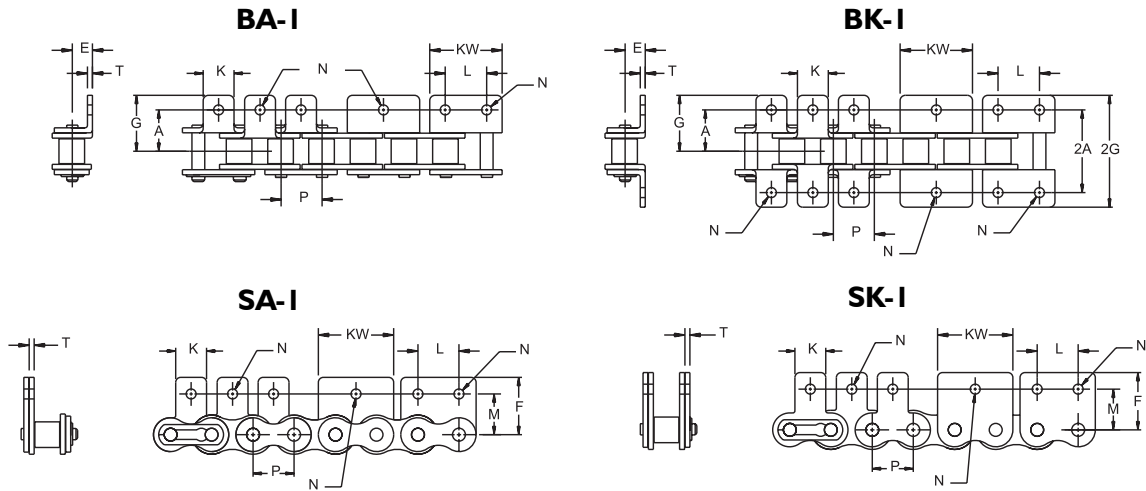
Drives, Inc.	Pitch	Link Plate								Carbon Max. Allowable Load	Average Weight
		W	D	H	T	d	L	L ₁	L ₂		
Chain No.	P	W	D	H	T	d	L	L ₁	L ₂	Lb.	Lb./Ft.
C2040	1.000	0.312	0.312	0.472	0.060	0.156	--	0.319	0.382	615	0.340
C2050	1.250	0.376	0.400	0.590	0.080	0.200	--	0.409	0.477	1,010	0.580
C2060H	1.500	0.500	0.469	0.687	0.125	0.234	1.139	0.590	0.660	1,410	1.010
C2080H	2.000	0.626	0.625	0.943	0.156	0.312	1.413	0.745	0.845	2,350	1.770

Carbon Steel Large Roller

Drives, Inc.	Pitch	Link Plate							Carbon Max. Allowable Load	Average Weight
		W	D _s	H	T	d	L ₁	L ₂		
Chain No.	P	W	D _s	H	T	d	L ₁	L ₂	Lb.	Lb./Ft.
C2042	1.000	0.312	0.625	0.472	0.060	0.156	0.319	0.382	615	0.580
C2052	1.250	0.376	0.750	0.590	0.080	0.200	0.409	0.477	1,010	0.900
C2062H	1.500	0.500	0.875	0.687	0.125	0.234	0.590	0.660	1,410	1.461
C2082H	2.000	0.626	1.125	0.943	0.156	0.312	0.745	0.845	2,350	2.450

Carbon Steel Attachment Chain

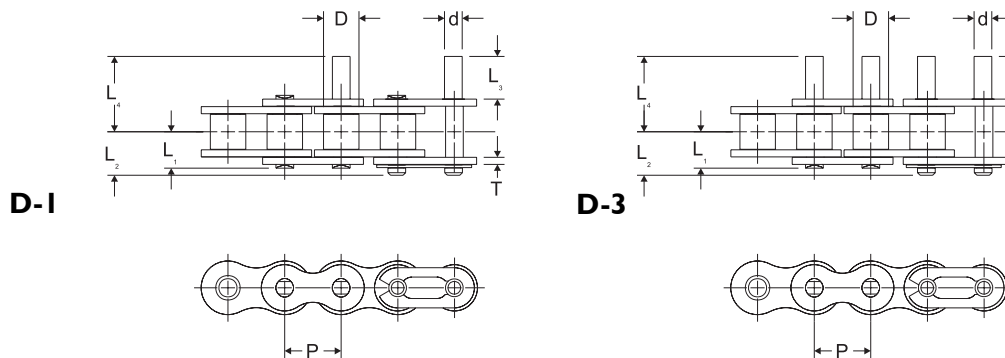
ANSI Roller Chain with Attachment



Carbon Steel

Drives, Inc.	(BA-BK-SA-SK Type) Attachment													Average Weight per Attachment - Lb.	
Chain No.	P	T	K	KW	L	N	A	E	G	(2A)	(2G)	M	F	BA-SA	BK-SK
40	0.500	0.060	0.374	0.970	0.500	0.142	0.500	0.311	0.681	1.000	1.362	0.500	0.685	0.0044	0.0088
50	0.625	0.080	0.500	1.210	0.625	0.205	0.625	0.406	0.917	1.250	1.834	0.625	0.906	0.0066	0.0132
60	0.750	0.094	0.625	1.460	0.750	0.205	0.750	0.469	1.106	1.500	2.212	0.720	1.051	0.0154	0.0308
80	1.000	0.125	0.750	1.940	1.000	0.268	1.000	0.625	1.413	2.000	2.826	0.969	1.358	0.0287	0.0574
100	1.250	0.156	1.000	--	--	0.343	1.250	0.780	1.768	2.500	3.536	1.252	1.732	0.0572	0.1144
120	1.500	0.187	1.250	--	--	0.386	1.500	0.906	2.197	3.000	4.394	1.437	2.081	0.0968	0.1935
140	1.750	0.221	1.375	--	--	0.448	1.750	1.125	2.484	3.500	4.968	1.750	2.500	0.1562	0.3124
160	2.000	0.250	1.500	--	--	0.516	2.000	1.252	2.827	4.000	5.654	2.000	2.760	0.2134	0.4268

Extended Pin Roller Chain



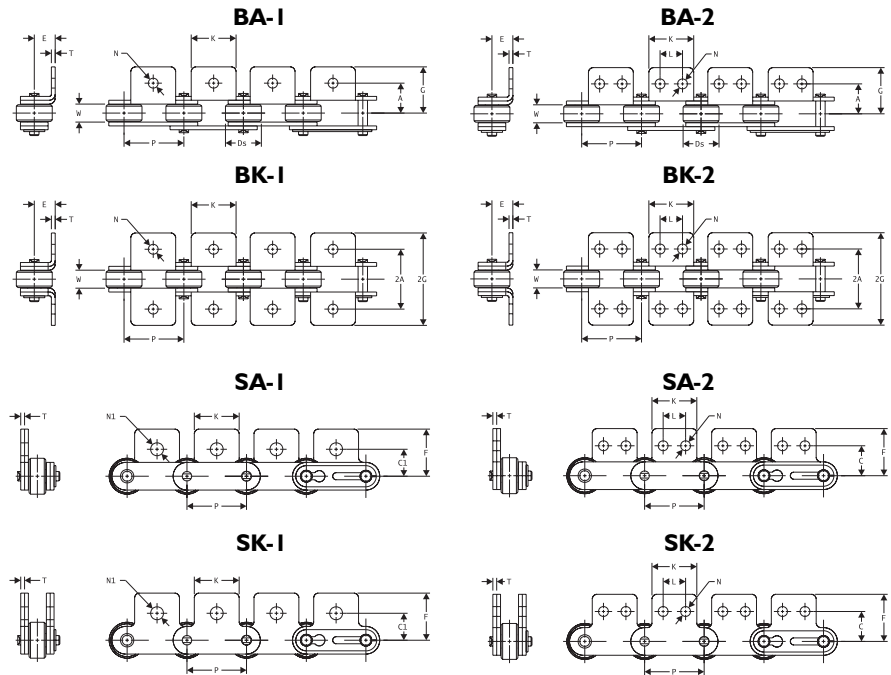
Carbon Steel

Drives, Inc.	Chain No.	P	T	d	L ₁	L ₂	L ₃	L ₄	Average Weight per Attachment - Lb.	
									D-1	D-3
	40	0.500	0.060	0.156	0.317	0.377	0.374	0.661	0.002	0.004
	50	0.625	0.080	0.200	0.399	0.489	0.469	0.827	0.004	0.008
	60	0.750	0.094	0.234	0.498	0.648	0.563	1.018	0.006	0.012
	80	1.000	0.125	0.313	0.638	0.857	0.752	1.335	0.020	0.040

NOTE: Larger pitch chains with extended pins available on a made-to-order basis. Consult Drives, Inc. Engineering for availability.

Carbon Steel Attachment Chain

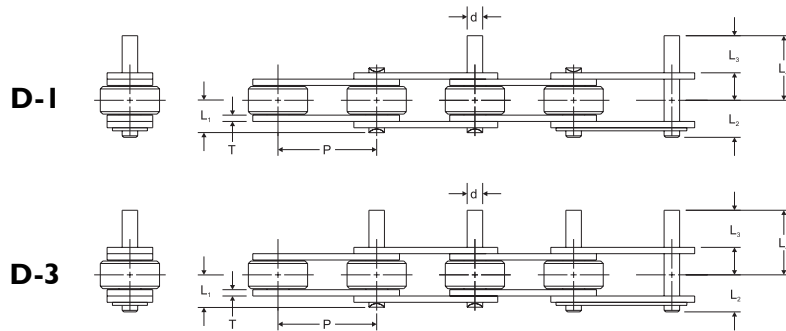
Extended Pitch Roller Chain with Attachment



Carbon Steel

Drives, Inc.			(BA-BK-SA-SK Type) Attachment												Additional Weight Per Attachment-Lb		Max. Allowable Load
Chain No.	Pitch P	Link Plate T	(2A)						(2G)						BA-SA	BK-SK	
			K	N	L	A	E	G	B	H	C	F	C1	N1			
C2040 C2042	1.000	0.060	0.750	0.142	0.374	0.500	0.358	0.750	1.000	1.500	0.531	0.780	0.437	0.205	0.006	0.013	615
C2050 C2052	1.250	0.080	0.937	0.205	0.469	0.625	0.437	0.953	1.252	1.906	0.625	0.969	0.563	0.268	0.013	0.026	1,010
C2060H C2062H	1.500	0.125	1.126	0.205	0.563	0.844	0.579	1.230	1.688	2.460	0.750	1.205	0.689	0.346	0.037	0.075	1,410
C2080H C2082H	2.000	0.156	1.500	0.268	0.752	1.094	0.750	1.598	2.188	3.196	1.000	1.583	0.874	0.406	0.082	0.163	2,350

Extended Pin Roller Chain



Carbon Steel

Chain No.	P	T	d	L ₁	L ₂	L ₃	L ₄	Additional Weight per Attachment-Lb.	
C2040 - C2042	1.000	0.060	0.156	0.317	0.377	0.374	0.661	0.002	0.004
C2050 - C2052	1.250	0.080	0.200	0.399	0.489	0.469	0.827	0.004	0.008
C2060H - C2062H	1.500	0.125	0.234	0.590	0.660	0.563	1.083	0.006	0.012
C2080H - C2082H	2.000	0.156	0.313	0.745	0.845	0.752	1.401	0.020	0.040